

AUTHORS INDEX

- BRIANO, B., 1997. - See / Zie: Wagner, H.P. & B. Briano.
- CALVO, I.A. & J. COLTRO Jr., 1997. - Studies on *Odontocymbiola americana* (Reeve, 1856) (Mollusca, Gastropoda: Volutidae), with the rediscovery of *Odontocymbiola cleryana* (Petit de la Saussaye, 1856) and descriptions of two new species. / Bestudering van *Odontocymbiola americana* (Reeve, 1856) (Mollusca, Gastropoda: Volutidae), met de herontdekking van *Odontocymbiola cleryana* (Petit de la Saussaye, 1856) en de beschrijving van twee nieuwe soorten. 44(3-4): 21-38.
- COLTRO, J. Jr., 1997. - See / Zie: Calvo, I.A. & J. Coltro Jr..
- COOMANS, H.E., 1996. - The Martin collection and the Zoological Museum at Amsterdam. / De Martin collectie en het Zoölogisch Museum te Amsterdam. 43(3-4): 17-22.
- DEKKER, H., 1996. - *Strombus ochroglottis betuleti* Kronenberg, 1991 in Thailand (Gastropoda: Strombidae) 44(1-2): 19-20.
- DEKKER, H. & J. GOUD, 1995. - Review of the Indo-West-Pacific species of *Divaricella* sensu auct. with descriptions of two new species and a summary of the species from other regions. (Part 2). / Overzicht van de levende soorten van *Divaricella* sensu auct. uit de Indo-West-Pacific met de beschrijving van twee nieuwe soorten en een opsomming van de soorten uit andere gebieden. (Deel 2) (Bivalvia: Lucinidae). 43(1-2): 1-12.
- DEKKER, H. & H. TURNER, 1996. - Redescription of *Thala malvacea* Jousseaume, 1898 (Gastropoda: Costellariidae). / Herbeschrijving van *Thala malvacea* Jousseaume, 1898 (Gastropoda: Costellariidae). 43(3-4): 23-24.
- DONEDDU, M. & B. MANUNZA, 1996. - The *Barycypraea mus* (Linnaeus, 1758) species-group. / De *Barycypraea mus* (Linnaeus, 1758) soorten-groep. 44(1-2): 1-16.
- GOUD, J., 1995. - See / Zie: Dekker, H. & J. Goud.
- GOUD, J., 1996. - See / Zie: Strack, H. & J. Goud.
- GOUD, J. & J. NEEFS, 1996. - The larger Marginelliform Gastropods (Cystiscidae and Marginellidae) collected during the CANCAP and MAURETANIA expeditions in the south-eastern part of the North Atlantic Ocean. The genera *Persicula*, *Prunum*, *Dentimargo*, *Marginella* and *Glabella*. / De grotere Marginella-vormige Gastropoden (Cystiscidae and Marginellidae) verzameld tijdens de CANCAP en MAURETANIA expedities in het zuidoostelijk deel van de Noordatlantische Oceaan. De genera *Persicula*, *Prunum*, *Dentimargo*, *Marginella* and *Glabella*. 43(3-4): 25-50.
- GOUD, J. 1997. - *Conus pulcher* Lightfoot, 1786 trawled in the North Sea. / *Conus pulcher* Lightfoot, 1786 opgevist in de Noordzee. 44(3-4): 49-50.
- JANSEN, P.I., 1995. - A review of the genus *Clanculus* Montfort, 1810 (Gastropoda: Trochidae) in Australia, with the description of a new subspecies and the introduction of a nomen novum. / Een overzicht van het geslacht *Clanculus* Montfort, 1810 (Gastropoda: Trochidae) in Australië, met de beschrijving van een nieuwe ondersoort en de introductie van een nomen novum. 43(1-2): 39-62.
- KAZMI, Q.B., N.M. TIRMIZI, 1997. - On two species of *Armina*: *A. babai* (Tchang-Si, 1934) and *A. punctilopsis* Lin, 1992 (Gastropoda, Opisthobranchia) from Pakistani coasts of the Indian Ocean with a note on the egg ribbons of *A. babai* / Over twee soorten van *Armina*: *A. babai* (Tchang-Si, 1934) en *A. punctilopsis* Lin, 1992 (Gastropoda, Opisthobranchia) van de Pakistaanse kusten van de Indische Oceaan met informatie over de eikapsels van *A. babai*. 44(3-4): 51-59.

INHOUD OP AUTEURS

- KRONENBERG, G.C., 1996. First record of *Anachis raysutana* Smythe, 1985 (Gastropoda: Columbellidae) from Somalia. / Eerste melding van *Anachis raysutana* Smythe, 1985 (Gastropoda: Columbellidae) van Somalië. 44(1-2): 17-18.
- MAN IN 'T VELD, L. & G.J. VISSER, 1995. - Contributions to the knowledge of Strombacea. 2: *Strombus (Doxander) vittatus entropi* versus *Strombus sulcatus*: a rectification. / Bijdragen tot de kennis van de Strombacea. 2: *Strombus (Doxander) vittatus entropi* versus *Strombus sulcatus*: een rechtzetting. 43(1-2): 63-64.
- MANUNZA, B., 1996. - See / Zie: Doneddu, M. & B. Manunza.
- MOOLENBEEK, R.G., 1996. - New skeneiform species of the genus *Lodderena* Iredale, 1924 from the Sultanate of Oman (Gastropoda: Skeneidae). / Nieuwe skenea-achtige soorten van het genus *Lodderena* Iredale, 1924 uit het Sultanaat Oman (Gastropoda: Skeneidae). 44(1-2): 21-28.
- MOOLENBEEK, R.G., 1996. - See / Zie: Röckel, D. & R.G. Moolenbeek.
- MULDER, G. & R.P.A. VOSKUIL, 1996. - On the Mollusca of the étangs (lagoons) of the French Mediterranean coast. / Over de weekdieren van de étangs (inlagen) aan de Middellandse Zeekust van Frankrijk. 43(3-4): 1-16.
- NEEFS, J., 1996. - See / Zie: Goud, J. & J. Neefs.
- RÖCKEL, D. & R.G. MOOLENBEEK, 1996. - *Conus tirardi*, a new species from the Pacific Ocean (Gastropoda: Conidae). / *Conus tirardi*, een nieuwe soort uit de Grote Oceaan (Gastropoda: Conidae). 44(1-2): 47-51.
- SLIK, F., 1997. - Collecting shells between the Elephant Seals, The shell fauna of Valdes Peninsula (Argentina) / Schelpen verzamelen tussen de zeelofantten, De schelpenfauna van Peninsula Valdes (Argentinië). 44(3-4): 39-48.
- STRACK, H.L., & J. GOUD, 1996. - Rumphius and the "Amboinsche Rariteitkamer". / Rumphius en de "Amboinsche Rariteitkamer". 44(1-2): 29-39.
- TAX, C.J.H.M., 1995. - Nautilus Shells as collectors' items in the "Kunst- und Wunderkammer. / Nautilus schelpen als verzamelobject in de "Kunst- und Wunderkammer. 43(1-2): 13-28.
- TAX, C.J.H.M., 1996. - Nautilus Shells as collectors' items in the "Kunst- und Wunderkammer, Supplementary notes. / Nautilus schelpen als verzamelobject in de "Kunst- und Wunderkammer, Aanvullende notities. 43(3-4): 51-52.
- TIRMIZI, N.M., 1997. - See / Zie: Kazmi, Q.B., N.M. Tirmizi.
- VISSER, G.J., 1995. - See / Zie: Man in 't Veld, L. & G.J. Visser.
- VOSKUIL, R.P.A., 1995. - The living species of the genus *Hydatina* Schumacher, 1817, (Mollusca: Gastropoda: Opisthobranchia: Hydatinidae) with the description of a new species. / De Recente soorten van het geslacht *Hydatina* Schumacher, 1817 (Mollusca: Gastropoda: Opisthobranchia: Hydatinidae) met de beschrijving van een nieuwe soort. 43(1-2): 29-38.
- VOSKUIL, R.P.A., 1996. - See / Zie: Mulder, G. & R.P.A. Voskuil.
- WAGNER, H.P. & B. BRIANO, 1997. - The Ovulidae from the Cape Rafun area, Somalia (Mollusca: Gastropoda) / De Ovulidae uit het gebied van Kaap Rafun, Somalië (Mollusca: Gastropoda). 44(3-4): 1-20.



INDEX TO SCIENTIFIC NAMES

INDEX OP WETENSCHAPPELIJKE NAMEN

I. (sub)species

I. (onder)soorten

Names of species are printed in *italic*, page numbers in normal refer to text, pagenumbers in **bold** refer to illustrations of a species. Subgenera are omitted in species names.

Namen van soorten staan in *cursief*, paginanummers in normaal lettertype verwijzen naar de tekst, paginanummers in **vet** verwijzen naar afbeeldingen. Subgenera zijn weggelaten in soortnamen.

Mollusca:

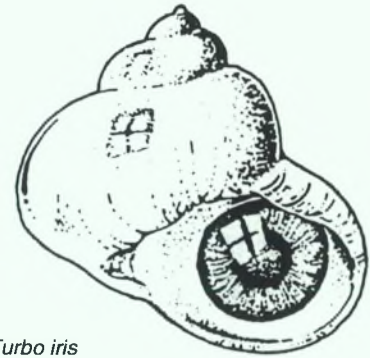
A

abbreviata, *Panopea* Valenciennes.....44(3-4): 48
acanthodes, *Trophon* Watson.....44(3-4): 40,44
achates, *Cypraea* d'Orbigny.....44(1-2): 6
aculeata, *Crepidula* (Gmelin).....44(3-4): 44
acuminata, *Amphissa* (E.A.Smith).....44(3-4): 44
acuminata, *Buccinum* (E.A.Smith).....44(3-4): 44
adamkusi, *Marginella* Bozetti.....43(3-4): 38
adamsi, *Radius* Horst & Schepman.....44(3-4): 14
adamsi, *Volva* Dunker.....44(3-4): 14
adansoni, *gibbula* (Payraudeau).....43(3-4): 5,13
adansoni, *Trochus* Payraudeau.....43(3-4): 5
adriatica, *Modiola* Lamarck.....43(3-4): 11
adriaticus, *Modiolus* (Lamarck).....43(3-4): 9,11
agnesia, *Buccinum* (Strebel).....44(3-4): 44
alba, *Abra* (Wood).....43(3-4): 9,14
albanyensis, *Clanculus* P.Jansen.....43(1-2): 39,42,48,50
albida, *Gibbula* (Gmelin).....43(3-4): 5,13
albinus, *Clanculus* A.Adams.....43(1-2): 40
albobincta, *Hydatina* (Van der Hoeven).....43(1-2): 32,34,35,36
albugo, *Clanculus* (Watson).....43(1-2): 40
almiratensis, *Barycypraea* (Olsson).....44(1-2): 4
alloysii, *Clanculus* Tenison-Woods.....43(1-2): 39,42,45,58,61
alvarezii, *Entodesma* d'Orbigny.....44(3-4): 48
amazona, *Marginella* Bayav.....43(3-4): 39
americana, *Lucina* C.B. Adams.....43(1-2): 7
americana, *Odontocymbiola* (Reeve).....44(3-4): 21-32
americana, *Transenpitar* (Doello-Jurado).....44(3-4): 48
americana, *Voluta* Reeve.....44(3-4): 23
amplustre, *Bulla* L.....43(1-2): 29,36
amplustre, *Bulla* "L." Born.....43(1-2): 36
amplustre, *Hydatina* (L.).....43(1-2): 30,35,36-38
amygdala, *Marginella* Kiener.....43(3-4): 32
amygdala, *Persicula*.....43(3-4): 27
amygdala, *Prunum* (Kiener).....43(3-4): 32,33,34
ancilla, *Adelomelon* (Solander).....44(3-4): 41,43,45
andersoni, *Cypraea* Ingram.....44(1-2): 2
angela, *Lucina* Melvill.....43(1-2): 5
angeli, *Clanculus* Tenison-Woods.....43(1-2): 59
angulata, *Chaetopleura* (Spengler).....44(3-4): 42
angusteplicata, *Leucosyrinx* (Strebel).....44(3-4): 45
angusterima, *Barycypraea* (Spicker).....44(1-2): 2
antiqua, *Protothaca* (King).....44(3-4): 41,43,47
anus, *Distorsio* (L.).....44(1-2): 34,38
apesa, *Syndesmya* *alba* var. de Gregorio.....43(3-4): 14
apicatus, *Strombus* *vittatus* Man in 't Veld & Visser.....43(1-2): 63
aplustre, *Hydatina* (L.).....43(1-2): 30
arctica, *Hiatella* (L.).....44(3-4): 48
arcuatum, *Cardium* Montagu.....43(1-2): 7
arenaria, *Glabella* Mörch.....43(3-4): 44
areola, *Phaliun* (L.).....43(1-2): 26,27
argo, *Argonauta* L.....43(1-2): 16
arnandusi, *Barycypraea* (Hertlein & Jordan).....44(1-2): 2
arranax, *Marginella* Bouchet & Warén.....43(3-4): 47
articulata, *Monodonta* Lamarck.....43(3-4): 6,13
articulatus, *Trochus* (Lamarck).....43(3-4): 6
aspera, *Ovula* Perry.....44(3-4): 17
ater, *Aulacomya* (Molina).....44(3-4): 40,43,44,46
atra, *Tegula* (Lesson).....44(3-4): 42
atrolineata, *Bulla* Schröter.....43(1-2): 32
atropurpureus, *Clanculus* (Gould).....43(1-2): 39,42,43,44,45,48
aurantia, *Glabella* Lamarck.....43(3-4): 36
aurantia, *Marginella* Lamarck.....43(3-4): 36,43

aurantia, *Pellissimnia* Carlsson.....44(3-4): 16
aurantia, *Phenacovolva* (Sowerby III).....44(3-4): 13,16,17
aurantium, *Dissona* Cate.....44(3-4): 16
aurantium, *Ovulum* Sowerby III.....44(3-4): 16
aurantium, *Pellissimnia* Schilder.....44(3-4): 16
aurantium, *Volva* Allan.....44(3-4): 16
aurata, *Plaxiphora* (Spalowsky).....44(3-4): 42
aurea, *Paphia* (Gmelin).....43(3-4): 7,15
aureus, *Tapes* Gmelin.....43(3-4): 15
australis, *Tritonia* Bergh.....44(3-4): 46
autumnalis, *Cypraea* Perry.....44(1-2): 6
avellana, *Marginella* Lamarck.....43(3-4): 29
avellana, *Persicula* *avellana* (Lamarck).....43(3-4): 29

B

babai, *Armina* (Tchang-Si).....44(3-4): 51-57
babai, *Linguella* Tchang-Si.....44(3-4): 54
barbata, *Modiola* L.....43(3-4): 11
barbatus, *Modiolus* (L.).....43(3-4): 9,11
beckii, *Adelomelon* (Broderip).....44(3-4): 45
belcheri, *Glabella* Hinds.....43(3-4): 36
belcheri, *Marginella* Hinds.....43(3-4): 33,36,41
betuleti, *Strombus* *ochroglottis* Kronenberg.....44(1-2): 19,20
bicarinatus, *Clanculus* Angas.....43(1-2): 39,44,45
bicornis, *Cypraea* *mus* Sowerby.....44(1-2): 1,6,8
bifasciata, *Marginella* Lamarck.....43(3-4): 44
bifasciata, *Marginella* Sowerby I.....43(3-4): 45
blakei, *Photinula* (Clench & Aguayo).....44(3-4): 42
blanda, *Marginella* Hinds.....43(3-4): 31
blanda, *Persicula* (Hinds).....43(3-4): 27,30,31,33
bobi, *Marginella* Catlow & Reeve.....43(3-4): 29
bobi, *Marginella* G.Fischer.....43(3-4): 29
bojadorensis, *Dentimargo* (Thiele).....43(3-4): 33,35
bojadorensis, *Marginella* Thiele.....43(3-4): 35
brandaris, *Bolinus* (L.).....43(3-4): 8
brandaris, *Murex* L.....43(3-4): 8
braziliensis, *Pandora* Sowerby.....44(304): 48
breve, *Ovulum* Sowerby I.....44(3-4): 5
brevirostris, *Phenacovolva* (Schumacher).....44(3-4): 15,18,19
brevis, *Ovula* Kiener.....44(3-4): 5
brevis, *Ovulum*.....44(3-4): 6
brevis, *Phenacovolva* Allan.....44(3-4): 5
brevis, *Prionovolva* (Sowerby I).....44(3-4): 1,2,5,8,19
brunneus, *Clanculus* A.Adams.....43(1-2): 39,44,45,55
bullata, *Carpiscula* (A.Adams & Reeve).....44(3-4): 13,14
bullata, *Ovula* Weinkauff.....44(3-4): 14
bullata, *Primovula* Schilder.....44(3-4): 14
bullatum, *Ovulum* A.Adams & Reeve.....44(3-4): 14



Turbo iris

C

caerulascens, *Psammobia* *depressa* var. Réquien.....43(3-4): 15
campbelli, *Strombus* Griffith & Pidgeon.....43(1-2): 63
cancellata, *Amphissa* (Castellanos).....44(3-4): 44
candida, *Barnea* (L.).....43(3-4): 7,15,16
caprearum, *Chiton* Scacchi.....43(3-4): 5
capuserpentis, *Cypraea* L.....43(1-2): 18
carcellesi, *Bulbus* Dell.....44(3-4): 44
carcellesi, *Calliostoma* Clench & Aguayo.....44(3-4): 42
carcellesi, *Olivancillaria* Klappenbach.....44(3-4): 45
caribaea, *Corbula* d'Orbigny.....44(3-4): 48
carneopicta, *Phenacovolva* Rehder & Wilson.....44(3-4): 15
carolinensis, *Siphocypraea* (Conrad).....44(1-2): 4,5
carpenteri, *Pellissimnia* Schilder.....44(3-4): 14
carpenteri, *Volva* Dunker.....44(3-4): 14
carthaginiensis, *Cypraea* Röding.....44(1-2): 6
carthaginiensis, *Porcellana* Schröter [non binom].....44(1-2): 6
casali, *Semele* Doello-Jurado.....44(3-4): 47
catena, *Lunatia* (da Costa).....43(3-4): 8,9
catena, *Natica* da Costa.....43(3-4): 8
catenoides, *Cyclostremiscus* Monterosato.....44(1-2): 22
cayapa, *Barycypraea* (Pilsbry & Olsson).....44(1-2): 2
chemnitzii, *Lucina* Philippi.....43(1-2): 7
chemnitzii, *Voluta* Dillwyn.....43(3-4): 44
chilensis, *Mytilus* Hupé.....44(3-4): 46
chilona, *Siphocypraea* (Dall).....44(1-2): 4
cincta, *Marginella* Kiener.....43(3-4): 34
cincta, *Prunum* (Kiener).....43(3-4): 34
cinctoria, *Bulla* Perry.....43(1-2): 29,36
cinctum, *Prunum* (Kiener).....43(3-4): 28,33,34
cingulata, *Marginella* (Dillwyn).....43(3-4): 29
cingulata, *Persicula* (Dillwyn).....43(3-4): 27,29,30,33
cingulata, *Voluta* Dillwyn.....43(3-4): 29
clanguloides, *Clanculus* (Wood).....43(1-2): 39,46,50,60
clanguloides, *Clanculus* "Wood".....43(1-2): 60
clanguloides, *Trochus* Wood.....43(1-2): 46
clangulus, *Clanculus* (Wood).....43(1-2): 39,45,46,54
clangulus, *Trochus* Wood.....43(1-2): 46
clara, *Aclyvolva* Cate.....44(3-4): 17
clathrus, *Epitonium* (L.).....43(3-4): 8
cleryana, *Cardiomya* (d'Orbigny).....44(3-4): 48
cleryana, *Odontocymbiola* (Petit de la Saussaye).....44(3-4): 21,22,24,27-32,37
cleryana, *Voluta* Petit de la Saussaye.....44(3-4): 27
cleryi, *Marginella* Petit.....43(3-4): 27,36,37,43



Ovula ovum

cochlidium, Buccinanops (Dillwyn).....44(3-4): 45
coeruleuscens, Photinula (King & Broderip).....
44(3-4): 42
columbiensis, Divaricella Lamy.....43(1-2): 6
columna, Halistylus (Dall).....44(3-4): 42
colus, Fusinus (L.).....43(3-4): 21
comarilis, Clanculus Hedley.....43(1-2): 39,45,47,57
commune, Epitonium (Lamarck).....43(3-4): 8,13
communis, Scalaria Lamarck.....43(3-4): 8
commutata, Cardium exiguum var. *Buquoy*, Dautzenberg & Dollfus.....43(3-4): 12
commutata, Lucina Philippi.....43(1-2): 7
compressus, Capulus E.A.Smith.....44(3-4): 44
conexa, Heleobia (Gaillard).....44(3-4): 44
consimile, Calliostoma (E.A.Smith).....
44(3-4): 40,42,43
consobrinus, Clanculus Tate, 1893.....
43(1-2): 39,42,45,47,59
conspersus, Clanculus A.Adams.....43(1-2): 58
constricta, Marginella Hinds.....43(3-4): 34
contaminata, Marginella Gaskoin.....43(3-4): 31
contrarius, Loripes Dunker.....43(1-2): 5
coppingeri, Calliostoma (E.A.Smith).....44(3-4): 42
coppingeri, Nassa E.A.Smith.....44(3-4): 44
corallina, Mactra (L.).....43(3-4): 7,12
cornea, Marginella Dillwyn.....43(3-4): 30
cornea, Marginella Lamarck.....43(3-4): 30
cornea, Persicula (Lamarck).....43(3-4): 30,31,33
corniculum, Amycla Olivi.....43(3-4): 8
corniculans, Nassarius (Olivi).....43(3-4): 8,9,10
corrugata, Lepidochitona (Reeve).....43(3-4): 5,6,9
corticata, Hebra (A.Adams).....44(1-2): 41,43
cosmani, Plesiothyreus Jousseaume.....43(3-4): 23
crassa, Pterygia Röding.....43(3-4): 29
crenulata, Nucula A.Adams.....44(3-4): 46
culmen, Pseudosimnia Cate.....44(3-4): 10,11,12,19
cumingi, Divalucina (A.Adams & Angas).....
43(1-2): 2,3,4,5
cumingi, Malletia (Hanley).....44(3-4): 46
cumingiana, Loripes Grassct.....43(1-2): 2
cumingiana, Marginella Petit.....43(3-4): 39
cumingiana, Marginella *helmatina* var. *Petit* de la Saussay.....43(3-4): 39
cumingii, Lucina Smith.....43(1-2): 2
cumulata, Volva *volva* Iredal.....44(3-4): 17
cypraeacea, Marginella Bory de St. Vincent.....43(3-4): 30
cypselis, Divaricella Melvill.....43(1-2): 6



Bubble Shell

dimidiata, Ancilla (Sowerby).....44(3-4): 45
distorta, Thracia (Montagu).....44(3-4): 48
divaricata, Lucinella (L.).....43(1-2): 7
divaricata, Lucina "Lamarck" auct.43(1-2): 2
dominicana, Clanculus Tenison-Woods. 43(1-2): 59
donacina, Tellina L.....43(3-4): 9,14
dondani, Primovula Cate.....44(3-4): 11
dondani, Serratovolva (Cate).....44(3-4): 11,12
donmoorei, Barycypraea (Petuch).....
44(1-2): 1,7,9-12,14,15
donmoorei, Siphocypraea Petuch.....44(1-2): 6
dufresnei, Zidona (Donovan).....44(3-4): 45
dunkeri, Clanculus (Koch in Philippi).....
43(1-2): 39,45,48
dunkeri, Trochus Koch in Philippi.....43(1-2): 48
dusaveli, Conus (H.Adams).....43(3-4): 20

E

eburnea, Divalinga (Reeve).....43(1-2): 6,7
edulis, Mytilus (L.).....43(3-4): 7,11,12
edulis, Ostrea L.....43(3-4): 11
edwardsi, Ocinebrina (Payraudcau).....43(3-4): 8,9
edwardsii, Murex (Payraudcau).....43(3-4): 8
egouen, Marginella Jousseaume.....43(3-4): 32
eightsii, Yoldia (Couthoy).....44(3-4): 46
emeryi, Cyclostremiscus Ladd.....44(1-2): 22,23
entropi, Strombus vittatus Man in 't Visser.....43(1-2): 63,64
entypoma, Divalucina Cotton.....43(1-2): 2,4
ephippium, Anomia L.....43(3-4): 7,12; 44(3-4): 47
equestris, Ostrea Say.....44(3-4): 47
erinacea, Ocenebra (L.).....43(3-4): 8,13
erinaceus, Casmaria (L.).....43(1-2): 26
erinaceus, Murex L.....43(3-4): 8
erminea, Pterygia Röding.....43(3-4): 44
euclia, Divalucina Cotton & Godfrey.....
43(1-2): 2,3,4,5
euchelioides, Clanculus Tate.....43(1-2): 39,45,49,54
exalbida, Eurhomalea (Dillwyn).....44(3-4): 47
exigua, Hydatina Heldley.....43(1-2): 29
exoleta, Dosinia (L.).....43(3-4): 15
exquisita, Hydatina Voskuil.....43(1-2): 32,35,36-38

F

faba, Glabella (L.).....43(3-4): 27,44,45,46
faba, Marginella Chenu.....43(3-4): 45
faba, Marginella L.....43(3-4): 44
faba, Voluta Dillwyn.....43(3-4): 44
faba, Voluta L.....43(3-4): 44
falklandica, Philine Powell.....44(3-4): 46
fasciata, Aplysia Poiret.....43(3-4): 10
fasciata, Bulla Bruguière.....43(1-2): 36
fasciata, Hydatina velum f. "Bruguière" Nord-sieck.....43(1-2): 33
fasciatum, Bulla Schumacher.....43(1-2): 36
felipponei, Chlamys (Dall).....44(3-4): 47
ferruginosa, Bulla Gmelin.....44(1-2): 6
ferrussacii, Pachycybiola (Donovan).....44(3-4): 45
festivus, Clanculus Tapparone Canefri.....43(1-2): 55
filosa, Hydatina Schumacher.....43(1-2): 29,32
flagellatus, Clanculus (Philippi).....
43(1-2): 39,49,50,52,55,58
flagellatus, Trochus Philippi.....43(1-2): 49
floridus, Clanculus (Philippi).....43(1-2): 39,42,50,52
fontainei, Anisodoris (d'Orbigny).....44(3-4): 46
formosa, Lodderena Powell.....44(1-2): 22
fragilis, Gastrana (L.).....43(3-4): 7,14
fruticum, Ovula Weinkauff.....44(3-4): 5
fruticum, Ovulum Reeve.....44(3-4): 5
fruticum, Primovula Azuma.....44(3-4): 5
fruticum, Prionovolva Schilder.....44(3-4): 5
fruticum, Prionovolva nuberculata Kuroda.....44(3-4): 5
fuliginosa, Cypraea Röding.....44(1-2): 6
fultoni, Barycypraea (Sowerby).....44(1-2): 1,6
fuscodentata, Cypraeovula (Gray).....44(1-2): 15
fuscotecta, Cypraea Sullioti.....44(1-2): 6
fusula, Phenacovolva Azuma & Cate.....44(3-4): 19

G

gabrielae, Crenavolva imitabilis Nicolay & Biraghi.....44(3-4): 11
galearis, Carpiscula Cate.....44(3-4): 14
gallina, Chamelea *gallina* (L.).....43(3-4): 7,15
gallina, Venus L.....43(3-4): 15



Hammer oyster/Hamerschelp

galloprovincialis, Mytilus Lamarck.....43(3-4): 11
gatiffi, Clanculus Tomlin.....43(1-2): 49
gayi, Tawera (Hupé).....44(3-4): 47,48
gemmulata, Terebra Kienner.....44(3-4): 45
geographica, Tapes pullastra var. *Gmelin*.....
43(3-4): 15
geographica, Venerupis (Gmelin).....43(3-4): 7,15
georgettina, Epitonium (Kienner).....44(3-4): 44
geversianus, Trochus (Pallas).....44(3-4): 40,44
gibba, Pompholigina (Gray).....43(1-2): 8
gibber, Tellina (Ihering).....44(3-4): 47
gibbosus, Clanculus A.Adams.....43(1-2): 52
gilchristi, Armina (Bergh).....44(3-4): 52
gilva, Marginella Goud & Ncefs.....43(3-4): 46,47,48
glabella, Marginella (L.).....43(3-4): 27,35,38-40,43
glabella, Voluta L.....43(3-4): 38
glaucum, Cerastoderma (Bruguière).....
43(3-4): 4,7,12
globulosum, Buccinanops (Kienner).....44(3-4): 45
gloriamaris, Conus Chemnitz.....43(3-4): 20
gloriosa, Marginella Jousseaume. 43(3-4): 38,39,43
gonoides, Aforia (Watson).....44(3-4): 45
goodalli, Marginella Sowerby 1.....43(3-4): 42
gracile, Ovulum A.Adams & Reeve.....44(3-4): 15
gracilis, Birostra Chenu.....44(3-4): 15
gracilis, Ovula Weinkauff.....44(3-4): 15
gracilis, Phenacovolva (A.Adams & Reeve).....
44(3-4): 13,15,16,19
gracilis, Volva Allan.....44(3-4): 15
gracillima, Neosimnia Allan.....44(3-4): 17
gracillima, Pellasimnia Schilder.....44(3-4): 17
gracillima, Phenacovolva (E.A.Smith).....
44(3-4): 14,17
gracillimus, Radius E.A.Smith.....44(3-4): 17
granosus, Clanculus Brazier.....43(1-2): 39,50,52,53,54
granti, Clanculus Hedley.....43(1-2): 39,50,53
griffini, Siphocypraea Petuch.....44(1-2): 4
guttata, Marginella Link.....43(3-4): 29

H

haldemanni, Nassarius (Dunker).....44(1-2): 45
hansena, Nassarius Kool.....44(1-2): 41-43
helmatina, Marginella (Rang).....43(3-4): 39,41,43
henekeni, Barycypraea (Sowerby).....
44(1-2): 2,4,5,6,15
henekeni, Siphocypraea Petuch.....44(1-2): 6
henekeri, Cypraea Sowerby.....44(1-2): 4
henseli, Lucapinella (Martens).....44(3-4): 40,42,43
hertweckorum, Siphocypraea Petuch.....44(1-2): 4
hesperia, Dentimargo (Sykes).....43(3-4): 33,35
hesperia, Marginella Sykes.....43(3-4): 35
hiantula, Fissurellidae (Lamarck).....44(3-4): 42
hindsiana, Marginella Petit.....43(3-4): 34
hughesi, Siphocypraea (Olsson & Petit).....44(1-2): 4
huttoniana, Lucina Vanatta.....43(1-2): 2,4
hyaena, Barycypraea (Schilder).....44(1-2): 2
hydatis, Haminea L.....43(3-4): 10
hydatis, Haminoea (L.).....43(3-4): 10,13

I

imitabilis, *Crenavolva* Cate.....44(3-4): 11
immaculata, *Gargamella* Bergh.....44(3-4): 46
imperatrix, *Marginella* Sykes.....43(3-4): 45
impervia, *Natica* Philippi.....44(3-4): 44
impudica, *Marginella* P.Fischer.....43(3-4): 47,48
incomparabilis, *Chimaeria* Briano.....44(3-4): 4,8,20
inflata, *Hydatina* Dunker.....43(1-2): 36
intermedia, *Melanella* (Cantraine).....44(3-4): 44
iris, *Falsimargaria* (E.A.Smith).....44(3-4): 42
irrorata, *Marginella* Menke.....43(3-4): 27,38-40,43
isabelleana, *Mactra* d'Orbigny.....44(3-4): 47
isabelleana, *Tivela* d'Orbigny.....44(3-4): 48
isabellei, *Anachis* (d'Orbigny).....44(3-4): 45
isabellei, *Chaetopleura* (d'Orbigny).....44(3-4): 42

J

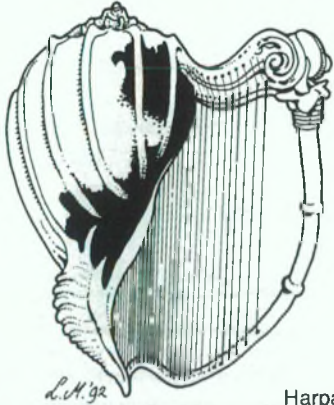
jadertinum, *Bittium* (Brusina).....43(3-4): 6
janseni, *Drillia* Strebel.....44(3-4): 45
japonicus, *Strombus* Reeve.....43(1-2): 63
jeanae, *Aperiovula* Cate.....44(3-4): 7
jeanae, *Pseudosimnia* (Cate).....44(3-4): 7,10,12
johnstoni, *Clanculus* Hedley.....43(1-2): 39,45,49,52,53,54
jousseumei, *Marginella* Locard.....43(3-4): 48
jucundus, *Clanculus* Gould.....43(1-2): 40,41
juttingae, *Lucinella* (Spaink).....43(1-2): 7

K

kophameli, *Drillia* Strebel.....44(3-4): 45
kophameli, *Margarites* (Strebel).....44(3-4): 42

L

labroguttata, *Delenovolva* Cate.....44(3-4): 16
labroguttata, *Phenacovolva* Schilder.....44(3-4): 16
lacteus, *Loripes* L.....43(3-4): 12
laeta, *Egouena* Jousseume.....43(3-4): 34
laevilabris, *Marginella* Jousseume.....43(3-4): 44
lamarcki, *Cardium edule* var. Reeve.....43(3-4): 12
lambis, *Lambis* (L.).....43(1-2): 14,15
lamellosa, *Barnea* (d'Orbigny).....44(3-4): 48
lanceolata, *Cyrtopleura* (d'Orbigny).....44(3-4): 48
lanceolata, *Neosimnia* Allion.....44(3-4): 14
lebruni, *Tonicia* Rochebrune.....44(3-4): 42
leloiri, *Pododesmus* Carcelles.....44(3-4): 47
lemurica, *Volva* Schilder.....44(3-4): 17
lessoni, *Siphonaria* Blainville.....44(3-4): 46
leucodon, *Cypraea* Broderip.....43(3-4): 21
leucomphalus, *Clanculus* Verco.....43(1-2): 39,47,51,54
limbata, *Glabella* Lamarck.....43(3-4): 40
limbata, *Marginella* Lamarck.....43(3-4): 27,40,43,46
limbata, *Natica* d'Orbigny.....44(3-4): 44
limbatus, *Clanculus* (Quoy & Gaimard).....43(1-2): 39,44,45,46,52,54
limbatus, *Trochus* Quoy & Gaimard.....43(1-2): 54
linaeae, *Siphocypraea* (Petuch).....44(1-2): 4
lineata, *Marginella* Lamarck.....43(3-4): 29
lineolata, *Rissoa* Michaud.....43(3-4): 6,13
liratula, *Lucina* Sowerby III.....43(1-2): 5
lochi, *Nassarius* Kool.....44(1-2): 41,44,45
longior, *Glycymeris* (Sowerby).....44(3-4): 41,46
lucasana, *Divaricella* Dall & Ochsner.....43(1-2): 6
lucens, *Persicula* Locard.....43(3-4): 31
lucinalis, *Loripes* (Lamarck).....43(3-4): 9,12
lupina, *Monodonta* Menke.....43(1-2): 48
lupinus, *Dosinia* (L.).....43(3-4): 7,15
lyoni, *Corbula* Pilsbry.....44(3-4): 48



Harpa

M

macaensis, *Odontocybiola* Calvo & Coltro.....44(3-4): 21,22,24,32,34,35
macha, *Ensis* (Molina).....44(3-4): 47
macromphalus, *Nautilus* Sowerby.....43(1-2): 13,14
maculata, *Persicula* Swainson.....43(3-4): 29
maculatus, *Clanculus* A.Adams.....43(1-2): 54
maculosa, *Cypraea* d'Orbigny.....44(1-2): 6
madrynensis, *Turbonilla* Lamy.....44(3-4): 45,46
magellanica, *Admete* (Strebel).....44(3-4): 45
magellanica, *Nacella* (Gmelin).....44(3-4): 42
magellanica, *Odontocybiola* (Gmelin).....44(3-4): 22; 45
magellanica, *Oenopota* (Martens).....44(3-4): 45
magellanica, *Pareuthria* (Philippi).....44(3-4): 44
magellanicum, *Eptonium* (Philippi).....44(3-4): 44
magellanicus, *Antistreptus* Dall.....44(3-4): 44
magellanicus, *Fusitriton* (Röding).....44(3-4): 44
magna, *Armina* Baba.....44(3-4): 52
malvacea, *Thala* Jousseume.....43(3-4): 23,24
margaritaria, *Monodonta* Philippi.....43(1-2): 55
margaritarius, *Clanculus* (Philippi).....43(1-2): 47
margaritarius, *Clanculus margaritarius* (Philippi).....43(1-2): 39,51,55,57
marginata, *Marginella* Locard.....43(3-4): 34
marginata, *Marginella* Wood.....43(3-4): 44
marginata, *Pseudosimnia* (Sowerby I).....44(3-4): 7
marginatus, *Solen* Montagu.....43(3-4): 12,13
marginatus, *Solen* Pennant.....43(3-4): 12
marmorata, *Modiolaria* Forbes.....43(3-4): 11
marmoratus, *Turbo* L.....43(1-2): 14,15
marmoreus, *Conus* L.....43(1-2): 26
marocana, *Marginella* Locard.....43(3-4): 47,48,49
martensi, *Mangelia* (Strebel).....44(3-4): 45
martini, *Prunum* (Petit).....44(3-4): 45
maugeri, *Clanculus* (Wood).....43(1-2): 39,51,57,61
maugeri, *Trochus* Wood.....43(1-2): 57
mauritanica, *Cypraea* L.....43(1-2): 18,19; 44(1-2): 10
maxillatus, *Clanculus* (Menke).....43(1-2): 39,50,57,58
megatrema, *Fissurellidea* (d'Orbigny).....44(3-4): 42
mediana, *Leptochiton* (Plate).....44(3-4): 42
michaelseni, *Mangelia* (Strebel).....44(3-4): 45
michaelseni, *Pareuthria* (Strebel).....44(3-4): 44
miliaris, *Lasaea* (Philippi).....44(3-4): 47
minima, *Cyclostrema* Tennison-Woods.....44(1-2): 22
minima, *Lodderena* (Tennison-Woods).....44(1-2): 24,26
minimus, *Mytilaster* (Poli).....43(3-4): 9,11
minimus, *Mytilus* Poli.....43(3-4): 11
minor, *Ensis* (Chenu).....43(3-4): 13,14
minor, *Ensis siliqua* var. *Monterosato*.....43(3-4): 14
moniliferum, *Buccinanops* (Kiener).....44(3-4): 45
morum, *Trochus* Philippi.....43(1-2): 54
mozambicensis, *Divaricella* Cox.....43(1-2): 6
muleperensis, *Siphocypraea* Petuch.....44(1-2): 4
multipunctatus, *Clanculus margaritarius* P. Jansen.....43(1-2): 39,56,57
multipunctatus, *Nassarius* (Schepman).....44(1-2): 45
multituberculata, *Chrysalida* (Castellanos).....44(3-4): 45
muricatum, *Trachycardium* (L.).....44(3-4): 41,47
muriciformis, *Xymenopsis* (King & Broderip).....44(3-4): 40,44
mus, *Barycypraea* (L.).....44(1-2): 1,2,4,6-10,13-15
mus, *Barycypraea mus* (L.).....44(1-2): 6,7,11,13,14
mus, *Cypraea* L.....44(1-2): 6
musica, *Marginella* Hinds.....43(3-4): 40,41,46
mutabilis, *Nassa* (L.).....43(3-4): 10
mutabilis, *Nassarius* (L.).....43(3-4): 10,13
mutabilis, *Strombus* Swainson.....44(1-2): 19
myosotis, *Ovatella* (Draparnaud).....43(3-4): 10,13

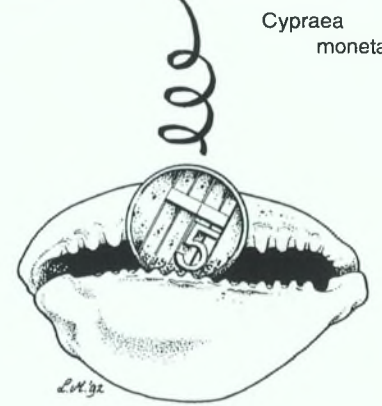
N

nana, *Lodderena* Powell.....44(1-2): 22
navicula, *Haminea* da Costa.....43(3-4): 10
navicula, *Haminoea* (da Costa).....43(3-4): 10,13
nectarea, *Phenacovolva* Iredale.....44(3-4): 14
nectarea, *Phenacovolva rosea* Cate.....44(3-4): 14
nectarea, *Volva* Schilder.....44(3-4): 14
neritea, *Cyclope* (L.).....43(3-4): 8,13
neritea, *Neritula* L.....43(3-4): 8
nivea, *Prionovolva* Cate.....44(3-4): 5,6
nodata, *Glabella* (Hinds).....43(3-4): 45,46

nodata, *Marginella* Hinds.....43(3-4): 45
nodiliratus, *Clanculus* A.Adams.....43(1-2): 59
nodulosus, *Clanculus* A.Adams.....43(1-2): 40,41
nordenskjoldi, *Calliostoma* Strebel.....44(3-4): 42
notocenica, *Divaricella* King.....43(1-2): 2,4
nudum, *Calliostoma nudum* (Philippi).....44(3-4): 42

O

occiduus, *Macroclanculus* Cotton & Godfrey.....43(1-2): 61
ochroglottis, *Strombus* Abbott.....44(1-2): 19,20
ochroglottis, *Strombus mutabilis* Abbott.....44(1-2): 19
ochroglottis, *Strombus ochroglottis* Abbott.....44(1-2): 19,20



ochroleucus, *Clanculus* (Philippi).....43(1-2): 39,42
ochroleucus, *Trochus* Philippi.....43(1-2): 42
oldi, *Strombus* Emerson.....44(1-2): 18
olivaeforme, *Prunum* (Kiener).....43(3-4): 34
olivaeformis, *Marginella* Kiener.....43(3-4): 34
olivaeformis, *Prunum* (Kiener).....43(3-4): 33,34
omalomphalus, *Clanculus* A.Adams.....43(1-2): 44
omanensis, *Lodderena* Moolenbeek.....44(1-2): 21,22,24,25,27
orbignyana, *Tegula* (Pilsbry).....44(3-4): 40,42,43
ornata, *Lodderena* (Ollson & McGinty).....44(1-2): 21,23,25,27
ornata, *Divaricella* "Dautzenberg".....43(1-2): 7
ornatus, *Cyclostremiscus* Ollson & McGinty.....44(1-2): 21,23
otohimeae, *Conus* Kuroda & Ito.....43(3-4): 20; 44(1-2): 49,50
ovata, *Abra* (Philippi).....43(3-4): 9,14
ovata, *Cypraea* Gray.....44(1-2): 6
ovata, *Syndesmya* Philippi.....43(3-4): 14
ovum, *Cypraea* Röding.....44(1-2): 6

P

pachynepon, *Lodderena* (Pilsbry & Olsson).....44(1-2): 22
pallidus, *Trochus* (Broderip).....44(3-4): 40,43,44
paludosa, *Bittium reticulatum* var. *Bucquoy*, *Dautzenberg* & *Dollfus*.....43(3-4): 46
papposus, *Holoplocamus* Odhner.....44(3-4): 6
papyracea, *Thracia* (Poli).....43(3-4): 9,16
patagonica, *Berthella* (d'Orbigny).....44(3-4): 46
patagonica, *Chlamys* (King & Broderip).....44(3-4): 47
patagonica, *Corbula* d'Orbigny.....44(3-4): 48
patagonica, *Diodora* (d'Orbigny).....44(3-4): 42
patagonica, *Entodesma* (d'Orbigny).....44(3-4): 48
patagonica, *Lamellaria* E.A.Smith.....44(3-4): 44
patagonica, *Lithophaga* (d'Orbigny).....44(3-4): 46
patagonica, *Mactra* d'Orbigny.....44(3-4): 47
patagonica, *Pandora* (Dall).....44(3-4): 48
patagonica, *Petricola* (d'Orbigny).....44(3-4): 48
patagonica, *Phidiana* (d'Orbigny).....44(3-4): 46
patagonica, *Solemya* Lamarck.....44(3-4): 46
patagonica, *Spirotropis* (d'Orbigny).....44(3-4): 45
patagonica, *Tegula* (d'Orbigny).....44(3-4): 44
patagonica, *Volvarina* (Martens).....44(3-4): 45
patagonicus, *Geitodoris* Odhner.....44(3-4): 46
patriae, *Solariella* Carcelles.....44(3-4): 42
pelseneeri, *Trochus* E.A.Smith.....44(3-4): 40,44
pergrandis, *Conus* Iredale.....43(3-4): 20
perparvula, *Divalinga* (Dall).....43(1-2): 7
persicula, *Marginella* (L.).....43(3-4): 29

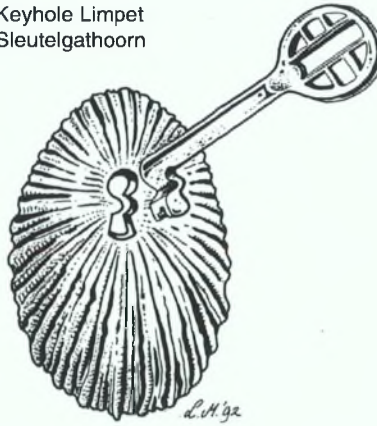
persicula, *Persicula* (L.).....43(3-4): 29,32
persicula, *Persicula persicula* (L.).....43(3-4): 29
persicula, *Pterygia* Röding.....43(3-4): 30
persicula, *Voluta* L.....43(3-4): 29
personatus, *Clanculus* (Philippi in Küster & Kobelt).....43(1-2): 39,50,52,58
perspicua, *Lamellaria* (L.).....44(3-4): 44
pescalia, *Odontocymbiola* Clench & Turner.....43(3-4): 22; 45
petagnae, *Gregariella* (Scacchi).....43(3-4): 9,11
petitii, *Marginella* Duval.....43(3-4): 41
petitiana, *Tellina* d'Orbigny.....44(3-4): 47
petitii, *Marginella* Duval.....43(3-4): 27,41,46
pharaonius, *Trochus* L.....43(1-2): 40
philippii, *Clanculus* (Koch in Philippi).....43(1-2): 39,41,42,49,51,58,59
philippii, *Trochus* Koch in Philippi.....43(1-2): 58
philippinarum, *Birostra* Patel.....44(3-4): 14
philippinarum, *Ovula* Tyron.....44(3-4): 14
philomenae, *Clanculus* Tenison-Woods.....43(1-2): 58
physis, *Hydatina* (L.).....43(1-2): 29,30,31,32-34,35
pica, *Cittarium* (L.).....43(1-2): 26,27
picturata, *Cantharidella* (A.Adams & Angas).....43(1-2): 40
pileolis, *Calyptraea* d'Orbigny.....44(3-4): 44
pileus, *Calyptraea* (Lamarck).....44(3-4): 44
pilula, *Lucina* C.B.Adams.....43(1-2): 7
pisum, *Lucina* Philippi.....43(1-2): 7
pisum, *Nucula* Sowerby.....44(3-4): 46
plamula, *Lithophaga* (Hanley).....44(3-4): 46
plana, *Scrobicularia* (da Costa).....43(3-4): 7,14
plata, *Olivella* (Ihering).....44(3-4): 45
platensis, *Mytilus edulis* d'Orbigny.....44(3-4): 46
plebeius, *Tagelus* (Lightfoot).....44(3-4): 47
plebejus, *Clanculus* (Philippi).....43(1-2): 39,48,51,59
plicatus, *Trophon* (Lightfoot).....44(3-4): 39,40,43,44



Pecten

plumbea, *Pareuthria* (Philippi).....44(3-4): 44
polaris, *Nacella* (Hombron & Jaquinot).....44(3-4): 42
pompilius, *Nautilus* (L.).....43(1-2): 13-27
pooki, *Lodderena nana* Fleming.....44(1-2): 22
porteri, *Cypraea* Cate.....43(3-4): 21
poucheti, *Marginella* Petit.....43(3-4): 38
problematica, *Siphocypraea* (Heilprin).....44(1-2): 4
proficua, *Semele* (Pulteney).....44(3-4): 47
protea, *Crepidula* (d'Orbigny).....44(3-4): 44
prunum, *Prunum* (Gmelin).....43(3-4): 32
pseudofaba, *Glabella* (Sowerby II).....43(3-4): 45,46
pseudofaba, *Marginella* Sowerby II.....43(3-4): 45
pseudogracilis, *Phenacovolva weaveri* Cate.....44(3-4): 15
pudica, *Amphiperas* A.Adams.....44(3-4): 5,6
pudica, *Ovula* Weinfaunt.....44(3-4): 5
pudica, *Prionovolva* Liltved.....44(3-4): 5
pudica, *Prionovolva pudica* Cate.....44(3-4): 5
pudicum, *Ovulum* Reeve.....44(3-4): 5
puelcha, *Olivella* (Duclos).....44(3-4): 45
puelchana, *Ostrea* d'Orbigny.....44(3-4): 47
pulchella, *Bulla* Swainson.....43(1-2): 36
pulchellus, *Cyclostremiscus* Olsson & McGinty.....44(1-2): 22
pulcher, *Conus* Lightfoot.....44(3-4): 49,50
pulla, *Tricolia pulla* (L.).....43(3-4): 6
pullum, *Eumetula* (Philippi).....44(3-4): 44
punctata, *Diplodonta* (Say).....44(3-4): 47
punctilopsis, *Armina* Lin.....44(3-4): 51,53,55-58
purissima, *Typhlodaphne* (Strebcl).....44(3-4): 45

Keyhole Limpet
Sleutelgathoorn



purpurata, *Amiantis* (Lamarck).....44(3-4): 47
purpuratus, *Clanculus* Pilsbry.....43(1-2): 58
purpuratus, *Perumytilis* (Lamarck).....44(3-4): 46
pygmaea, *Limatula* (Philippi).....44(3-4): 47

Q

quadrisulcata, *Divalinga* (d'Orbigny in Sagra).....43(1-2): 7
quoyana, *Bulla* Orbigny [non Dall].....43(1-2): 32
quoyanus, *Perotrochus* Fischer & Bernardi.....43(3-4): 21

R

rangii, *Limacina helicina* (d'Orbigny).....44(3-4): 46
raphaeli, *Clanculus* Tenison-Woods.....43(1-2): 58
rarilineata, *Gibbula* (Michaud).....43(3-4): 5,6
rarilineatus, *Trochus* (Michaud).....43(3-4): 5
raysutana, *Anachis* Smythe.....44(1-2): 17-18
reticulata, *Nassa* (L.).....43(3-4): 10
reticulatum, *Bittium* (Da Costa).....43(3-4): 6
reticulatus, *Nassarius* (L.).....43(3-4): 9,10
rhigomaches, *Mathilda* Melvill & Standen.....44(3-4): 45
ringens, *Clanculus* (Menke).....43(1-2): 39,51,58,59
ringens, *Monodonta* Philippi.....43(1-2): 58
robertsoni, *Aperiovula* Cate.....44(3-4): 18,19,20
robusta, *Persicula* (Sowerby III).....43(3-4): 31
rodriguezii, *Brachidontes* (d'Orbigny).....44(3-4): 46
rogmartini, *Conus* da Motta.....43(3-4): 19,20
rosea, *Birostra* Patel.....44(3-4): 14
rosea, *Pareuthria* (Hombron & Jaquinot).....44(3-4): 44
rosea, *Phenacovolva* (A.Adams).....44(3-4): 13,14,15
rosea, *Phenacovolva rosea* Cate.....44(3-4): 14
rosea, *Volva* A.Adams.....44(3-4): 14
roseum, *Ovulum* Reeve.....44(3-4): 14
rostrata, *Pitar* (Koch).....44(3-4): 47
rubra, *Astyris* (Martens).....44(3-4): 45
rubrooperculata, *Barleelia* (Castellanos).....44(3-4): 44
rudis, *Pododesmus* (Broderip).....44(3-4): 41,43,47
ruffina, *Marginella* Swainson.....43(3-4): 38
rugosum, *Vexillum*.....43(1-2): 26,27
rushii, *Asthenothaerus* (Pilsbry).....44(3-4): 48

S

saltoensis, *Barycypraea* (Clark in Clark & Durham).....44(1-2): 2
saharica, *Persicula* Locard.....43(3-4): 31
samiae, *Conus* da Motta.....43(3-4): 19,20
samoensis, *Trochus* Rousseau [in Hombron & Jaquinot].....43(1-2): 43
santacruzense, *Olivella* Castellanos.....44(3-4): 45
saotomensis, *Odontocymbiola* Calvo & Coltro.....44(3-4): 21,22,24,32,35-36
saucyana, *Marginella* Reeve.....43(3-4): 34
scabrum, *Bittium* (Oliv).....43(3-4): 6,13
schilderorum, *Margovula* Cate.....44(3-4): 6,7
schilderorum, *Margovula* cf. Cate.....44(3-4): 6,8
schmidi, *Phenacovolva rosea* Fehse & Wiese.....44(3-4): 14
scobriculatus, *Nautilus* (Lightfoot).....43(1-2): 13,14,26
sebastiani, *Marginella* Marche-Marchad & Rosso.....43(3-4): 27,28,37,38,41,42,46

sechellensis, *Divalucina* (d'Orbigny).....43(1-2): 8
semiaspera, *Phlyctiderma* (Philippi).....44(3-4): 47
seminuda, *Atrina* (d'Orbigny).....44(3-4): 46,47
semistriatus, *Donax* Poli.....43(3-4): 7,14,15
semiticum, *Vexillum* (Jickeli).....43(3-4): 23
semperi, *Armina* (Bergh).....44(3-4): 51
senegalensis, *Venerupis* (Gmelin).....43(3-4): 15
senhousia, *Musculista* (Benson in Cantor).....43(3-4): 9,11
septenarium, *Astele* Melvill & Standen.....43(1-2): 59
septenarium, *Calliostoma* Melvill & Standen.....43(1-2): 59
septenarium, *Pulchrastele* Melvill & Standen.....43(1-2): 59
septenarius, *Clanculus* (Melvill & Standen).....43(1-2): 39,51,59,60
serrata, *Lucina* d'Orbigny in Sagra.....43(1-2): 7
sertulariarum, *Anachis* (d'Orbigny).....44(3-4): 45
shackelfordi, *Nassarius* Melvill & Standen.....44(1-2): 41,44,45
siculum, *Parvicardium* (Sowerby II).....43(3-4): 5,9,12
simplex, *Cypraea* d'Orbigny.....44(1-2): 6
simplex, *Porcellana* Martini [non binom.].....44(1-2): 6
smithi, *Trochus* Wood.....43(1-2): 61
solenoides, *Darina* (King).....44(3-4): 47
solitarius, *Cyclostremiscus* Hertlein & Allison.....44(1-2): 21,23
soluta, *Falsilunatia* (Gould).....44(3-4): 44
soyoeae, *Divalucina* Habe.....43(1-2): 1,2,5
sp., *Pseudosimnia*.....44(3-4): 9,12
sphaeroides, *Lucina* Conrad.....43(1-2): 8
staminea, *Bulla* Menke.....43(1-2): 32
stigma, *Pseudosimnia* Cate.....44(3-4): 10,11
stigmatarius, *Clanculus* A.Adams.....43(1-2): 39,40,46,50,60
striata, *Lodderena* (Kay).....44(1-2): 22
striata, *Tindaria* (King).....44(3-4): 46
striatus, *Jujubinus* (L.).....43(3-4): 5,6,13
strigilla, *Lucina* Stimpson.....43(1-2): 7
stroemfeldi, *Hydatina* Odhner.....43(1-2): 33
subaequalis, *Malletia* (Sowerby).....44(3-4): 46
subnodosa, *Odontocymbiola* (Leach).....44(3-4): 22; 45
subpictes, *Musculus* (Cantraine).....43(3-4): 11
subtruncata, *Spisula* (da Costa).....43(3-4): 9,12
subturrita, *Marginella* (Fischer).....43(3-4): 46,48
subturrita, *Marginella impudica* var. P.Fischer.....43(3-4): 48
sulcata, *Modiolaria* Risso.....43(3-4): 11
sulcatus, *Conus* Hwass in Bruguière.....43(3-4): 20
sulcatus, *Strombus* Holten.....43(1-2): 63-64
sulculata, *Nuculana* (Couthoy in Gould).....44(3-4): 46
suta, *Siphocypraea mus* Coen.....44(1-2): 46
suxdorfii, *Drillia* Strebcl.....44(3-4): 45
swainsoni, *Conus* Estival & Von Cosel.....44(1-2): 47,49,50

T

taeniolata, *Armina* (Bergh).....44(3-4): 51



Voluta musica



Fasciolaria tulipa

tanae, *Lodderena* Moolenbeck.....44(1-2): 21,22,25,26,27
tankervillei, *Ancilla* Swainson.....44(3-4): 45
tehuelcha, *Olivella* (Duclos).....44(3-4): 45
tehuelchus, *Chlamys* (d'Orbigny).....44(3-4): 41,43,47
tehulelchus, *Solen* Philippi.....44(3-4): 47
tenella, *Limopsis* Jeffreys.....44(3-4): 46
tenuis, *Phasianella* Michaud.....43(3-4): 6
tenuis, *Tellina* (da Costa).....43(3-4): 9,14
tenuis, *Tricolia* (L.).....43(3-4): 6,13
tetrastichus, *Polyschides* (Watson).....44(3-4): 48
teuleri, *Barycypraea*.....44(1-2): 6
textoria, *Ovula* Röding.....44(3-4): 17
thalassiarchi, *Bulla* A.Adams.....43(1-2): 36
thomasi, *Clanculus* Crosse.....43(1-2): 53,54
thurmanni, *Philine* Marcus & Marcus.....44(3-4): 46
tinctilis, *Margovula*.....44(3-4): 10
tirardi, *Conus* Röckel & Moolenbeck.....44(1-2): 47-51
tixierae, *Fissurella radiosa* Metevier.....44(3-4): 42

transitoria, *Siphocypraea* Olsson & Petit.....44(1-2): 4
trapesina, *Gaimardia* (Lamarck).....44(3-4): 47
triangula, *Mactra subtruncata* var. Renier.....43(3-4): 12
trippeana, *Siphocypraea* Parodiz.....44(1-2): 4
tristensis, *Barycypraea mus* (Petuch).....44(1-2): 1,7,9-12,15
tristensis, *Cypraea mus* Petuch.....44(1-2): 6
trifaria, *Lucina* Krynicki.....43(1-2): 7
trogiloides, *Cypraea* Meuschen [non binom.].....44(1-2): 6
truncatula, *Retusa* (Bruguère).....43(3-4): 10
trunculus, *Donax* L.....43(3-4): 7,14,15
tuberae, *Cypraea* Ingram.....44(1-2): 2
tuberculata, *Acanthocardia* (L.).....43(3-4): 7,12
tuberculata, *Cypraea mus* Gray.....44(1-2): 6
tuberculatum, *Cardium* L.....43(3-4): 12

U
undatoides, *Clanculus* Tenison-Woods.....43(1-2): 39,42,51,60,61
undularia, *Lucinella* (S.V.Wood).....43(1-2): 7
undatum, *Buccinum* L.....44(3-4): 40
undatus, *Clanculus* (Lamarck).....43(1-2): 39,51,57,61
unedo, *Clanculus* A.Adams.....43(1-2): 55
urceus, *Olivancillaria* (Röding).....44(3-4): 45
uretai, *Olivancillaria* Klappenbach.....44(3-4): 45
uruguayense, *Buccinanops* (Pilsbry).....44(3-4): 45
uruguayensis, *Macoma* (E.A.Smith).....44(3-4): 47
uruguayensis, *Turbonilla* Pilsbry.....44(3-4): 46

V
valdiviae, *Peracla* (Meisenheimer).....44(3-4): 46
valentia, *Cypraea* Perry.....43(3-4): 21
vanelli, *Cypraea* Humphrey.....44(1-2): 6
variabilis, *Persicula* Schumacher.....43(3-4): 29
variegatus, *Clanculus* A.Adams.....43(1-2): 54
vesica, *Olivancillaria* (Gmelin).....44(3-4): 45
velum, *Bulla* Gmelin.....43(1-2): 36
velum, *Hydatina* "Gmelin" Nordsieck.....43(1-2): 33
velutina, *Venericardia* (E.A.Smith).....44(3-4): 47
ventricosa, *Rissoa* Desmarest.....43(3-4): 6,13

verhoefi, *Conus* [?nom. nud.].....44(1-2): 47,48,49
verrilli, *Hydatina* Pilsbry.....43(1-2): 32
verrucosa, *Venus* L.....43(3-4): 15
verrucosus, *Venus* L.....43(3-4): 15
vesicaria, *Hydatina* (Lightfoot).....43(1-2): 30-34,35
vestita, *Dialula* (Abraham).....44(3-4): 46
vexillum, *Hydatina* Sowerby.....43(1-2): 36
vicweei, *Conus* Old.....43(3-4): 20
vilardeboana, *Felaniella* (d'Orbigny).....44(3-4): 47
villosiuscula, *Thracia papyracea* var. Brown.....43(3-4): 16
vimoni, *Marginella* Jousseaume.....43(3-4): 44
vittatus, *Strombus vittatus* L.....43(1-2): 63,64
volva, *Birostra* Swainson.....44(3-4): 17
volva, *Bulla* L.....44(3-4): 17
volva, *Ovula* Lamarck.....44(3-4): 17
volva, *Ovulum* Sowerby II.....44(3-4): 17
volva, *Radius* Thiele.....44(3-4): 17
volva, *Volva* (L.).....44(3-4): 13,17,18
volva, *Volva* volva Cate.....44(3-4): 17
vulgatum, *Cerithium* Bruguière.....43(3-4): 8
vulgatum, *Theridium* (Bruguère).....43(3-4): 8,9

W
weaveri, *Phenacovolva* Liltved.....44(3-4): 15
weaveri, *Phenacovolva weaveri* Cate.....44(3-4): 15
weberi, *Divalinga* Olsson & McGinty.....43(1-2): 17
weedingi, *Isoclanculus* Cotton.....43(1-2): 48
whitworthi, *Diminovula* Wilson.....44(3-4): 9
whitworthi, *Pseudosimnia* Cate.....44(3-4): 9,12
wieseorum, *Pseudosimnia* Lorenz.....44(3-4): 2,7
wilsoniana, *Prionovolva pudica* Cate.....44(3-4): 5,6
woodwardi, *Yoldia* Hanley.....44(3-4): 46

Y
yatesi, *Clanculus* Crosse.....43(1-2): 58
yoshioi, *Phenacovolva* Azuma & Cate.....44(3-4): 17

Z
zebrides, *Clanculus* A.Adams.....43(1-2): 44
zietsemani, *Cypraea* Liltved & Le Roux.....44(1-2): 4
zonata, *Hydatina* (Lightfoot).....43(1-2): 32,34,35,36

INDEX TO SCIENTIFIC NAMES

REGISTER OP WETENSCHAPPELIJKE NAMEN.

II. (sub)genus names

II. (onder)geslachts-namen.

Names of (sub)genera are printed in *italic*, page numbers in normal refer to text, pagenumbers in **bold** refer to species belonging to that (sub)genus, which are also illustrated.

Namen van (onder)geslachten staan in *cursief*, pagina nummers in normaal lettertype verwijzen naar de tekst, paginanummers in **vet** verwijzen naar illustraties van soorten van betreffend (onder)geslacht.

A
Abra.....43(3-4): 9,14
Acanthocardia.....43(3-4): 7,12
Acyvolvula.....44(3-4): 17
Adelomelon Dall.....44(3-4): 22,23; 41,43,45
Admete.....44(3-4): 45
Aforia.....44(3-4): 45
Afrocypraea Schilder.....44(1-2): 2
Alcihoë H. & A.Adams.....44(3-4): 22
Amianthis.....44(3-4): 47
Amphiperas.....44(3-4): 5
Amphissa.....44(3-4): 44
Amycla.....43(3-4): 8
Anachis.....44(1-2): 17,18; 44(3-4): 45
Ancilla.....44(3-4): 45
Anisodoris.....44(3-4): 46
Anomia.....44(3-4): 47
Antistreptus.....44(3-4): 44
Aperiovula.....44(3-4): 7,18,19,20
Aplustra Swainson.....43(1-2): 29
Aplustrum Schumacher.....43(1-2): 29
Aplysia.....43(3-4): 10
Argonauta.....43(1-2): 16
Armina.....44(3-4): 51-58
Astetele.....43(1-2): 59
Asthenothaerus.....44(3-4): 48
Astyris.....44(3-4): 45
Atrina.....44(3-4): 46,47
Aulacomya.....44(3-4): 40,43,46

B
Barleia.....44(3-4): 44
Barnea.....43(3-4): 7,15,16; 44(3-4): 48
Barycypraea Schilder.....44(1-2): 1-16
Bernaya Jousseaume.....44(1-2): 2
Bernayia.....44(1-2): 1
Berthella.....44(3-4): 46
Birostra.....44(3-4): 14-17
Bitium.....43(3-4): 6,13
Bolinus.....43(3-4): 8
Brachydontes.....44(3-4): 46
Buccinanops.....44(3-4): 45
Buccinulum.....44(3-4): 44
Buccinum.....44(3-4): 40
Bulbus.....44(3-4): 44
Bulla.....44(1-2): 6; 44(3-4): 17

C
Calcarovula.....44(3-4): 1,13,17
Calcaria.....44(3-4): 17
Calliostoma.....43(1-2): 59,60; 44(3-4): 40,42,43
Calyptrea.....44(3-4): 44
Canarium.....44(1-2): 19,20
Canthadirella.....43(1-2): 40
Capulus.....44(3-4): 44
Cardiomya.....44(3-4): 48
Cardium.....43(1-2): 7; 43(3-4): 12; 44(3-4): 47
Carpiscula.....44(3-4): 1,12,14
Cerastoderma.....43(3-4): 4,7,12
Cerithium.....43(3-4): 8

Chaetopleura.....44(3-4): 42
Chamelea.....43(3-4): 7,15



Strombus pugilis

Chiton.....43(3-4): 5
Cittarium.....43(1-2): 26,27
Chimaeria.....44(3-4): 1,4,5,8,20
Chlamys.....44(3-4): 41,43,47
Chrysallida.....44(3-4): 45
Cianculus Montfort.....43(1-2): 39-61
Ctena.....43(1-2): 6
Codakia.....43(1-2): 5
onus.....43(1-2): 15,26; 43(3-4):
 19,20; 44(1-2): 47-50; 44(3-4): 49-50
Corbula.....44(3-4): 48
Costellaria.....43(3-4): 23
Crenavolva.....44(3-4): 11
Crenella.....44(3-4): 46
Crepidula.....44(3-4): 40,43,44
Cyclope.....43(3-4): 8,13
Cyclostrema.....44(1-2): 22
Cyclostremiscus.....44(1-2): 21-23
Cymbiola Swainson.....44(3-4): 22
Cypraea.....43(1-2): 19; 43(3-4): 21; 44(1-2): 1-16
Cypraeovula.....44(1-2): 15
Cyrtopleura.....44(3-4): 48

D
Darina.....44(3-4): 47
Delenovolva.....44(3-4): 16
Dentimargo Cossmann.....43(3-4): 25,33,34,35
Diaulula.....44(3-4): 46
Diminovolva.....44(3-4): 1,9,12
Diodora.....44(3-4): 42
Diplodonta.....44(3-4): 47
Dissona.....44(3-4): 16
Distorsio.....44(1-2): 34,38
Divalucina.....43(1-2): 1-4
Divaricella.....43(1-2): 1,2,4-7
Donax.....43(3-4): 7,14,15
Dosinia.....43(3-4): 7,15
Doxander.....43(1-2): 63,64
Drillia.....44(4-5): 45

E
Egouena.....43(3-4): 34
Epitonium.....43(3-4): 8,13
Ensis.....43(3-4): 13,14; 44(3-4): 47
Entodesma.....44(3-4): 48
Epitonium.....44(3-4): 44
Euclanculus.....43(1-2): 40
Eumetula.....44(3-4): 44
Eurhomalea.....44(3-4): 47
Euriclanculus Cotton & Godfrey.....43(1-2): 40
Eutrochus.....43(1-2): 59

F
Falsilunatia.....44(3-4): 44
Falsimargarita.....44(3-4): 42
Felaniella.....44(3-4): 47
Fissurella.....44(3-4): 42
Fissurellidea.....44(3-4): 42
Fusinus.....43(3-4): 21
Fusitriton.....44(3-4): 44

G
Gaimardia.....44(3-4): 47
Gargamella.....44(3-4): 46
Gastrana.....43(3-4): 7,14
Geitodoris.....44(3-4): 46
Gibbula.....43(3-4): 5,6,13
Gisortia Joussecaume.....44(1-2): 2
Glabella Swainson.....43(3-4): 25,27,28,31,44,45,46



Cypraea camelopardalis

Tulbandschelp Turban Shell



Glycymeris.....44(3-4): 41,46
Gregariella.....43(3-4): 9,11

H
Halistylus.....44(3-4): 42
Haminea.....43(3-4): 10
Hamineoa.....43(3-4): 10,13
Hebra H. & A. Adams.....44(1-2): 41-43
Heleobia.....44(3-4): 44
Hiatella.....44(3-4): 48
Hippopus.....43(1-2): 15
Holoplocamus.....44(3-4): 46
Hydatina Schumacher.....43(1-2): 29-38
Hydatioria Iredale.....43(1-2): 29

I
Iacra.....43(1-2): 6
Inflatovula.....44(3-4): 1,7,10,11,12
Isoclanculus Cotton & Godfrey.....43(1-2): 40,48

J
Jagonia.....43(1-2): 5
Jujubinus.....43(3-4): 5,6,13

L
Lambis.....43(1-2): 14,15
Lamellaria.....44(3-4): 44
Lasaea.....44(3-4): 47
Lepidichitona.....43(3-4): 5,6,9
Leporicypraea.....43(3-4): 21
Leptochiton.....44(3-4): 42
Leucosyrinx.....44(3-4): 45
Limacina.....44(3-4): 46
Limatula.....44(3-4): 47
Limopsis.....44(3-4): 46
Linguella.....44(3-4): 51-57
Lithophaga.....44(3-4): 46
Lodderena Iredale.....44(1-2): 21-28
Loripes.....43(1-2): 5,7; 43(3-4): 9,12
Lucapinella.....44(3-4): 40,42,43
Lucina.....43(1-2): 2,5-8
Lucinella.....43(1-2): 4,7
Lunatia.....43(3-4): 8,9
Lyncina.....43(3-4): 21

M
Macoma.....44(3-4): 47
Macroclanculus Cotton & Godfrey.....43(1-2): 40,61
Maetra.....43(3-4): 7,12
Malletia.....44(3-4): 46
angelia.....44(3-4): 45
Margarites.....44(3-4): 42
Marginella Lamarck.....43(3-4): 25,27,28-48
Margovula.....44(3-4): 1,6,7,8,10
Mathilda.....44(3-4): 45
Melanella.....44(3-4): 44
Mesoclanculus Cotton & Godfrey.....43(1-2): 40
Microclanculus Cotton & Godfrey.....43(1-2): 40
Microloripes.....43(1-2): 5
Micromelo Pilsbry.....43(1-2): 29
Modiolaria.....43(3-4): 11
Modiolaria.....43(3-4): 11
Modiolus.....43(3-4): 9,11

Monodonta.....43(1-2): 43,48,55,57-59; 43(3-4): 5,6,13
Murex.....43(3-4): 8
Musculista.....43(3-4): 9,11
Musculus.....43(3-4): 11
Mytilaster.....43(3-4): 9,11
Mytilus.....43(3-4): 7,11,12; 44(3-4): 46

N
Nacella.....44(3-4): 42
Nassa.....43(3-4): 10; 44(3-4): 44
Nassarius.....43(3-4): 9,10,13; 44(1-2): 41-45
Natica.....43(4-3): 8; 44(3-4): 44
Nautilus.....43(1-2): 13-27; 43(3-4): 51,52
Neosimnia.....44(3-4): 14,17
Neritula.....43(3-4): 8
Netastoma.....44(3-4): 48
Noalda Iredale.....43(1-2): 29
Nucula.....44(3-4): 46

O
Ocenebra.....43(3-4): 8,13
Ocinebrina.....43(3-4): 8,9
Octopus.....44(3-4): 50
Odontocymbiola.....44(3-4): 21-38; 45
Oenopota.....44(3-4): 45
Olivancillaria.....44(3-4): 45
Olivella.....44(3-4): 45
Ostrea.....43(3-4): 11; 44(3-4): 47
Ovatella.....43(3-4): 10,13
Ovula.....44(3-4): 5,14,15,17
Ovulum.....44(3-4): 5,14-17

P
Pachycymbiola.....44(3-4): 45
Pachystremiscus.....44(1-2): 22,23
Pandora.....44(3-4): 48
Panopea.....44(3-4): 48
Paphia.....43(3-4): 7,15
Pareuthria.....44(3-4): 44
Parvaplustrum Powell.....43(1-2): 29
Parvicardium.....43(3-4): 5,6,9,12
Pellissimnia.....44(3-4): 1,13,14-17
Peracle.....44(3-4): 46
Perotrochus.....43(3-4): 21
Persicula Schumacher.....43(3-4): 25,27,28-31,33
Perumytilis.....44(3-4): 46
Petricola.....44(3-4): 48
Phalium.....43(1-2): 26,27
Phenacolepas.....44(3-4): 14
Phenacovolva.....44(3-4): 1,3,5,13,14-17,18,19
Phidiana.....44(3-4): 46
Philine.....44(3-4): 46
Phlyctiderma.....44(3-4): 47
Pholas.....43(3-4): 16
Photinula.....44(3-4): 42
Pillucina.....43(1-2): 6
Pitar.....44(3-4): 47
Plaxiphora.....44(3-4): 42
Plesiothyreus.....43(3-4): 23
Pleurophyllidia.....44(3-4): 51
Pododesmus.....44(3-4): 41,43,47
Polyschides.....44(3-4): 48
Pompholigina.....43(1-2): 8
Porcellana [non binom.].....44(1-2): 6
Primovula.....44(3-4): 3,13,14
Prionovolva.....44(3-4): 1,2,3,5,6,8,19
Protothaca.....44(3-4): 41,43,47

Telescopium
 a. juvenile, b. adult





Conus

Prunum Herrmannsen.....
43(3-4): 25,28,31,32,33,34; 44(3-4): 45
Psammobia.....43(3-4): 13,15
Pseudosimnia.....44(3-4): 1,2,3,7,9-11,12,19
Pterygia.....43(3-4): 29,30,44
Pulchrastele.....43(1-2): 40,59,60

R
Radius.....44(3-4): 14,17
Retusa.....43(3-4): 10
Rissoa.....43(3-4): 6,13

S
Scalaria.....43(3-4): 8

Scaphander.....43(1-2): 33
Scrobicularia.....43(3-4): 7,14
Semele.....44(3-4): 47
Serratovolva.....44(3-4): 1,11,12
Siphocypraea Heilprin.....44(1-2): 2,4,5,6
Siphonaria.....44(3-4): 46
Solariella.....43(1-2): 40; 44(3-4): 42
Solemya.....44(3-4): 46
Solen.....43(3-4): 12,13,14; 44(3-4): 47
Spirotropis.....44(3-4): 45
Spisula.....43(3-4): 9,12
Sirombus.....
3(1-2): 63,64; 44(1-2): 18; 44(1-2): 19,20
Syndesmya.....43(3-4): 14

T
Tagelus.....44(3-4): 47
Tapes.....43(3-4): 7,15
Tawera.....44(3-4): 47,48
Tectus Montfort.....43(1-2): 40
Tegula.....44(3-4): 40,42,43,44
Telasco.....44(1-2): 41,44
Tellina.....43(1-2): 7; 43(3-4): 9,14; 44(3-4): 47
Terebra.....44(3-4): 45
Thala.....43(3-4): 23,24
Theridium.....43(3-4): 8,9
Thracia.....43(3-4): 9,16; 44(3-4): 48
Tindaria.....44(3-4): 46
Tivela.....44(3-4): 48
Tonicia.....44(3-4): 42
Trachycardium.....44(3-4): 41,43,47; 44(3-4): 47
Transenpitar.....44(3-4): 48
Tricolia.....43(3-4): 6,13

Tridacna.....43(1-2): 15
Tritonia.....44(3-4): 46
Trochus L.43(1-2): 40-61; 43(3-4): 5,6
Trophon.....44(3-4): 39,40,43,44
Turbo.....43(1-2): 14,15
Turbonilla.....44(3-4): 45,46
Turbovula.....44(3-4): 1,13,15-17,18,19
Typhlodaphne.....44(3-4): 45

U
Urosalpinx.....43(3-4): 8

V
Venericardia.....44(3-4): 47
Venerupis.....43(3-4): 7,15
Venus.....43(1-2): 6; 43(3-4): 15
Vexillum.....43(1-2): 26,27; 43(3-4): 23
Vitrinella.....44(1-2): 22
Voluta.....43(3-4): 29; 44(3-4): 21-23,27
Volva.....44(3-4): 1,13,14-18
Volvarina.....44(3-4): 45

X
Xymenopsis.....44(3-4): 40,44

Y
Yoldia.....44(3-4): 46

Z
Zidona.....44(3-4): 45
Zoila Jousseau.....44(1-2): 1,2

III. genus and species names of non mollusca

III. genus- en soortnamen van niet-weekdieren

Names are printed in *Italic*. Page numbers in normal refer to text, page numbers in **bold** refer to illustrations.

Namen staan in *cursief*. Paginanummers in normaal lettertype verwijzen naar tekst, **vetgedrukte** paginanummers verwijzen naar afbeeldingen.

PLANTAE

Chlorophyceae:

lactuca, *Ulva* L.43(3-4): 4,6
 ? *Macrocystes* sp.44(3-4): 47
Ulva lactuca L.43(3-4): 4,6
 ? *Thalassia*.....44(1-2): 8
 ? sp., *Macrocystes*.....44(3-4): 47

Angiospermae:

nana, *Zostera* Roth.....43(3-4): 3
 sp., *Zostera*.....43(3-4): 3,4
Zostera nana Roth.....43(3-4): 3
Zostera sp.43(3-4): 3,4
Zostera (sp.).....43(3-4): 5,8,11

*****:

oceanica, *Posidonia* (L.).....43(3-4): 3
Posidonia (sp.).....43(3-4): 3,5,8
Posidonia oceanica (L.).....43(3-4): 3

ANIMALIA

Cnidaria:

Actinoptilum molle (Kükenthal).....44(3-4): 18
Anthipathes sp.4493-4): 16
chinense, *Solenocaulon* (Kükenthal).....44(3-4): 14
Dendronephthya gigantea (Verril).....44(3-4): 6
Dendronephthya habereri (Kükenthal).....44(3-4): 6
Euplexaura sp.44(3-4): 15
flammea, *Lophiogorgia* (Ellis & Solander).....
44(3-4): 15
fusca, ?*Muriceides* Thompson.....44(3-4): 17
gigantea, *Dendronephthya* (Verril).....44(3-4): 6
habereri, *Dendronephthya* (Kükenthal).....44(3-4): 6
Homophyton verrucosum (Möbius).....44(3-4): 15
Lophiogorgia flammea (Ellis & Solander).....
44(3-4): 15
molle, *Actinoptilum* (Kükenthal).....44(3-4): 18
 ?*Muriceides fusca* Thompson.....44(3-4): 17
pulmo, *Rhizostoma* (Macri).....43(3-4): 3
Rhizostoma pulmo (Macri).....43(3-4): 3
 sp., *Anthipathes*.....4493-4): 16
 sp., *Euplexaura*.....44(3-4): 15

Solenocaulon chinense (Kükenthal).....44(3-4): 14
verrucosum, *Homophyton* (Möbius).....44(3-4): 15

Chordata: Tunicata:

Ciona intestinalis (L.).....43(3-4): 4
intestinalis, *Ciona* (L.).....43(3-4): 4

Chordata: Vertebrata: Reptilia:

Natrix sp.43(3-4): 4

Chordata: Vertebrata: Mammalia:

leonina, *Mirounga* (L.).....44(3-4): 39
Mirounga leonina (L.).....44(3-4): 39
orca, *Orcinus* (L.).....44(3-4): 41
Orcinus orca (L.).....44(3-4): 41

This index is compiled by Gijs Kronenberg.
 Drawings made by Leo Man in 't Veld.

Dit register is samengesteld door Gijs Kronenberg.
 Afbeeldingen van Leo Man in 't Veld.



Vita Marina & Spirula

Home Page

<http://home.pi.net/~spirula>

A very informative Web-site with:

- * Actual info about Vita Marina and Spirula
- * A list of symposia and club meetings around the world
- * A directory of conchologists with their special interests to other sites
- * Shell art galleries, lists of new species